

“BUS” projects in SCP – Sri Lanka

Integrated Wastewater and
Solid Waste Management
Plan in illegal settlement in
Wattala



Introduction

Settlement: Nawaloka Udyanapura (Oliyamulla)

Land ownership: Urban Development Authority

Purpose of reclaimed land: re-location

No. of houses: 200

Location characteristic: low lying, flood-prone

Techn. Assistance and community mobilisation:
National Housing Development Authority

SCP/EPM process and outputs

- Domestic wastewater management priority
- Solid waste management priority
- Councilors and other stakeholders requested wastewater treatment plant in settlement
- **OUTPUT: one septic tank with bio-filter for 35 houses with private sector and CBO**

SCP

- SCP demo on solid waste collection
- Septic tank for 35 houses
- Anaerobic Upflow filtration for 35 houses

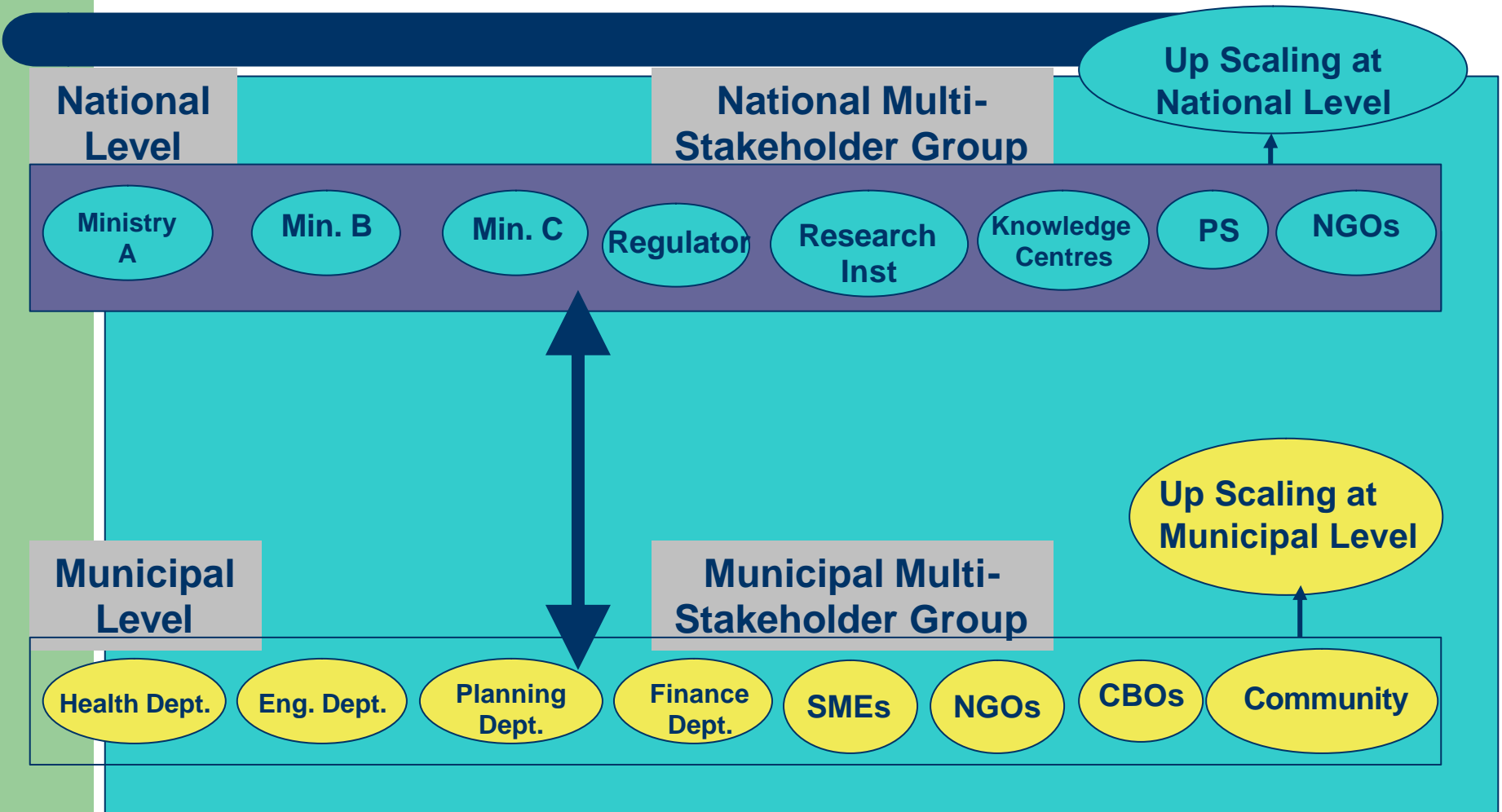
Present status of project after 12 years

- Dilapidated condition of sewerage system
- Improper management of garbage collection
- Changes to the houses without statutory approvals
- Poor community organisation, and low attention to operation and maintenance of the project

Challenges for 1st phase SCP/EPM

- Water demand by the Community for Community Development
 - Non-availability of an NGO for social mobilisation
 - Changes made to the houses without statutory
 - Poor participation by State Agencies
- MODEL – to the other un(der)-served settlement for an integrated Solid Waste and Waste Water Management.

Multi-Stakeholder Group for learning



Objectives of BUS initiatives

- To strengthen the capacity of Wattala UC and their partners:
 - To effectively plan
 - Improve and deliver BUS in un(ser)served areas
 - By accessing existing demo projects
 - Developing an up-scaling process for the poor

BUS partners

- National Housing & Development Authority
- Ministry of Urban Utilities
- Wattala UC
- ITDG
- Sevanatha
- Open University of Sri Lanka

Progress and Outputs

- Technical study on low-cost domestic waste water options
- Report on SWM and demo projects in Wattala
- Situation analysis report on current practices in SWM
- Formation of Community Development Council
- Integrated Strategies on SWM and on WWM
- Documentation of the process

Progress made

- Survey of unauthorised structures and issuing of “enumeration cards”
- Organised preparation of detailed plan by Dept of Surveys
- Discussion underway with UDA to obtain sole land ownership vested with NHDA for issuing of deeds to the families

Process issues at National level

- Leadership by NHDA – leads Working Group
- WG – pro-active and contributing to comm. Development issues
- WG – flexible, creative, open mind, innovative with new opportunities
- Facilitation by Wattala, UN-Habitat and IRC

WORKING GROUP

- | | |
|----------------------------|---|
| ● National level partners: | 2 |
| ● NGOs | 2 |
| ● Research institute | 1 |
| ● Donor and consultancy | 1 |
| ● LA | 1 |

Issues on Scaling-up at National level

- WWM and SWM: policy, strategy and regulation, policy on legalizing illegal settlement
- Monitoring at three levels: CBO, Urban Council and NHDA
- Funding: discussions held with ADB, JICA, USAID
- Anchoring: Group of organizations.