

# **“BUS” Project in Sustainable Cities Programme**

## **Development of an Integrated Solid Waste Management Plan**

For

**Sri Jayawardhanapura Kotte  
Municipal Council  
Sri Lanka**

Presented by: Sarath Fernando

Municipal Commissioner SJKMC

# INTRODUCTION

<b>SRI JAYAWARDHANAPURA KOTTE</b>	<b>ADMINISTRATIVE CAPITAL PARLIAMENT LOCATED</b>
<b>LAND AREA</b>	<b>1704 HEC.</b>
<b>POPULATION</b>	<b>115,000</b> <b>MULTI ETHNIC</b> <b>25% OF POPULATION LIVES IN UNDERSERVED AREAS</b>
<b>HOUSING</b>	<b>45,000 Units</b>
<b>ROADS</b>	<b>250 Km</b>
<b>REVENUE</b>	<b>MAINLY FROM PROPERTY TAX, TRADE LEVIES, MARKET RENTS AND SERVICE CHARGES</b>

# **PRIORITY ISSUE : SOLID WASTE MANAGEMENT**

## **DISPOSAL – A VEXING PRIORITY PROBLEM**

- **PUBLIC RESISTANCE AND LITIGATION ENCOUNTERED**
- **SUPREME COURTS DIRECTIVE COMPREHENSIVE SWM STRATEGY**
- **OUTSOURCING COMMENCED – COLLECTION IMPROVED BUT DISPOSAL STILL A PROBLEM**
- **REDUCING WASTE, NEVER TRIED BEFORE**

## 3 SCP Demo Projects on SWM

1. To reduce frontloading of household waste for municipal collection: Popularizing the use of home based compost bins
2. Construction of a biogas plant
3. Encouraging home level separation and sale of recyclable waste setting up of a municipal collection centre

# UNDER SCP SJKMC MADE A STRATEGIC LEAP SEARCHING FOR TECHNICAL OPTIONS USING

## **EPM PROCESS**

- **INFORMATION**
- **CITY PROFILE**
- **CITY CONSULTATION**
- **STAKEHOLDER PARTNERSHIP**
- **WORKING GROUP**

# NEW APPROACH – Environment Planning & Management

## Working Groups at Municipal Level

### STAKEHOLDER INVOLVEMENT & EMPOWERMENT

STAKEHOLDERS LIKE AND SUPPORT SCP/ EPM

### CITY DEVELOPMENT COMMITTEE(CDC) FORMED

Capacity Building for councilors, officials & CBO's on Good Governance, EPM Process, EMIS, SWM technologies

### SUPPLEMENTED

- 'MILES' PROJECT (2004)  
(SJKMC, CITY OF MUNICH & CITY OF VITORIA)
- Basic Urban Services "BUS" PROJECT (2004)
- US Aid Project on revenue management (2005)

# IMPACT – INITIAL OUTCOME

- Powerful new technical approach to SWM : ‘3’ R Concept
- Home composting up scaled - great public demand
- 65% reduction of mainstreamed waste
- MC inspired by participatory methodologies like working groups
- Major data updated now through EMIS
- EMIS is now institulized in the city
- Environment profile and stakeholder rules are often used to tackle new issues



Participatory approach

# Municipal Level Up Scaling Issues

- Home composting and recycling centers has been demonstrated and scaled up – 3 ‘R’ s with focus on household & decentralized level
- **Policy on waste reduction**
- **Ex. Compost bin distribution**  
From 300 bins (2003) funded by SCP to 2100 (2005) funded by SJKMC
- **Recycling Centers**  
2004 – 1 Center (Funded by SJKMC)  
2005 – 2 Centers (Funded by SJKMC)
- Institutionalization – Mayor, Councilors all heads of Dept. meet regularly to review progress
- **Coordination & Monitoring at street level – CBO, NGO & Health Dept.**
- Livelihoods – 4 CBO’s has taken the initiative towards SWM Strategy
- Cap – B – SCP, US AID and MILES on Governance Issues & SWM for councilors, officials & community



# Municipal Level Up Scaling



Home composting

- Started as micro demonstrations
- Replicated the success to cover larger areas
- Influenced national approach on SWM
- BUS initiatives commenced
- Formulated first ever city strategy on SWM



Bio-gas



Waste separation

# Municipal Level Institutional Arrangements

**a. MAYOR AND COUNCILORS POSITIVE TOWARDS WG CONCEPT**

**b. CITY DEVELOPMENT COMMITTEE(CDC)**

- **AS A SUB COMMITTEE OF THE STANDING COMMITTEE ON HEALTH AND SANITATION**
- **LED BY CHAIRMAN OF HEALTH AND SANITATION COMMITTEE**

**c. SCP WORKING GROUP**

- **COUNCILLORS**
- **OFFICIALS**
- **GOVERNMENT AGENCIES**
- **CBO'S**
- **NGO'S**
- **PRIVATE SECTOR**
- **SCP / PST**

**d. MONTHLY MEETINGS**

**CDC SUGGESTIONS ARE FORWARDED TO HEALTH & SANITATION STANDING COMMITTEE AS RECOMMENDATIONS**

**STANDING COMMITTEE FORWARDS RECOMMENDATIONS FOR COUNCIL APPROVAL**

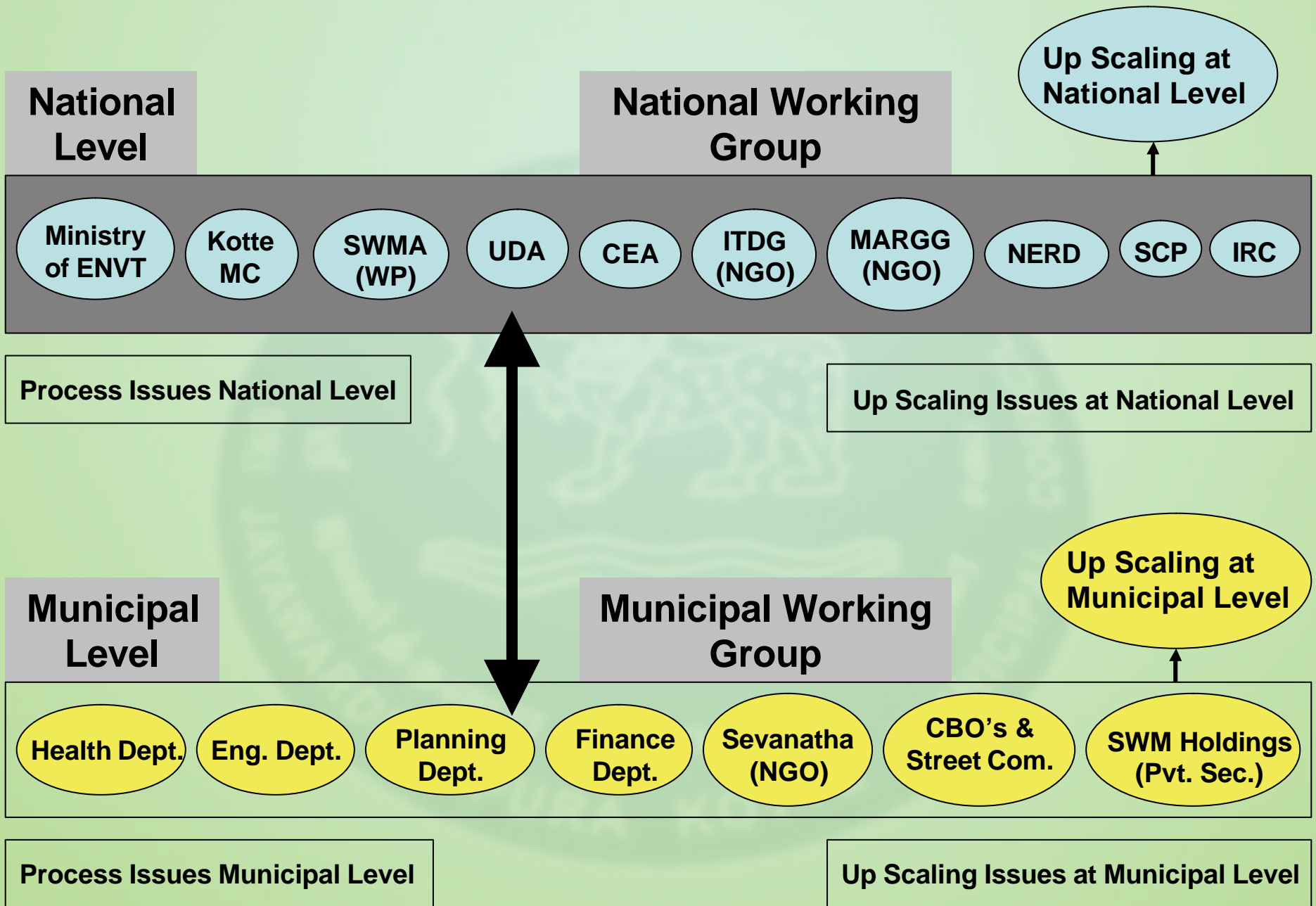
**LOCAL FACTORS THAT HAVE FACILITATED THE SCP / LA 21 ACTIVITIES IN SJKMC**

# Objectives of the BUS initiatives

To strengthen the capacity of Kotte MC & partners

To effectively plan improve & deliver Basic Urban Services in underserved areas by:

- Assessing existing demonstration projects
- Developing an up scaling pro-poor strategy through participatory mechanisms
- Developing capital investment



# BUS Partners – The Working Group

- **Ministry of Environment**
- **Kotte MC**
- **ITDG**
- **MaRGG**
- **Central Environment Authority**
- **NERD**
- **UDA**
- **Western Province Waste Management Authority**
  
- **BUS interventions**
  - **Technical study on home composting, bio gas & recycling centre (ITDG)**
  - **Social impact study on home composting, bio gas & recycling centre (MaRGG)**
  - **Integrated Strategy on Solid Waste Management (technical, social, financial & institutional (SJKMC))**

# Key Guiding Principles

1. The issue is much wider than SWM.
2. Don't waste waste.
3. Financial resources is not the main problem.
4. Landfill must be the last resort.
5. Recognize the informal sector.
6. Offer affordable solutions.
7. Involve people and stakeholders.
8. Administrative institutional changes are essential.
9. Free fences are less sustainable.
10. Documentation is highly important.

# The Strategy Elements

- **Assesses SWM problems / issues**
- **Suggests viable technologies**
- **Promote participatory methodologies**
- **Proposes institutional / human resources**
- **Stresses the capacity building need for policy / legal reforms**
- **Proposes non organic links among SWM, environment & poverty reduction**
- **Planning and monitoring at city, ward and lane levels**
- **Raising public awareness and environmental consciousness**
- **Involvement of all stakeholders**
- **Healthy mix technical options - Home composting, Separation of waste**
- **Recognition of the informal sector**

# **National Mainstreaming**

## **Lead role by Ministry of Environment**

- **Converting the SWM strategy into the integrated SWM plan**
- **Coordination of national support agencies**
- **Facilitation of working group mechanism**
- **Formulating bye-laws**
- **Monitoring and replicating**
- **Facilitates funding arrangements**
- **Formulating bye-laws for source separation using BUS and other experiences**





**Thank You ..**