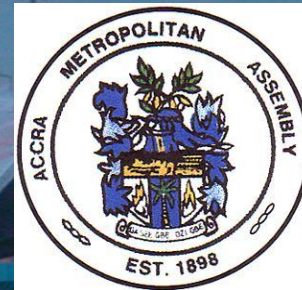
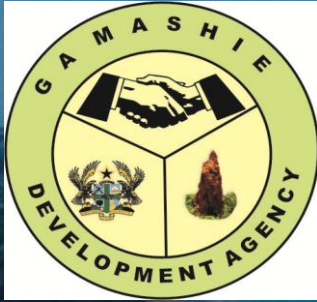


ACCRA METROPOLITAN ASSEMBLY



GA MASHIE DEVELOPMENT AGENCY

THE PEOPLE OF OLD ACCRA WELCOME PARTICIPANTS TO GHANA
FOR THE PSUP TRAINING WORKSHOP

(19TH TO 24TH SEPTEMBER, 2011 AT BEST WESTERN PREMIER HOTEL)

**A NEW ACCRA
FOR A BETTER GHANA**

GET INVOLVED.
STOP, THINK BEFORE YOU ACT.
DO THE RIGHT THING



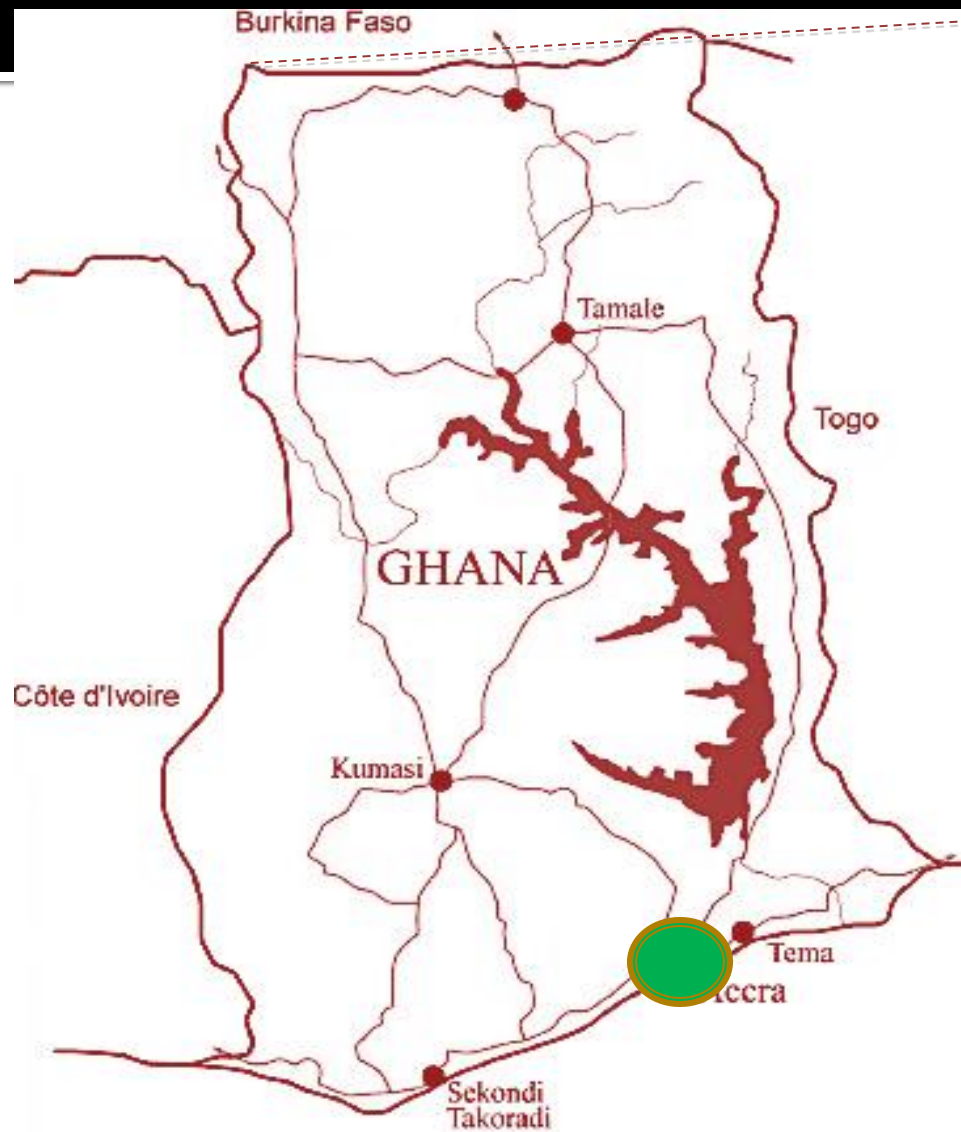
Old Accra: Our History Our Home



GHANA IN THE AFRICAN CONTEXT

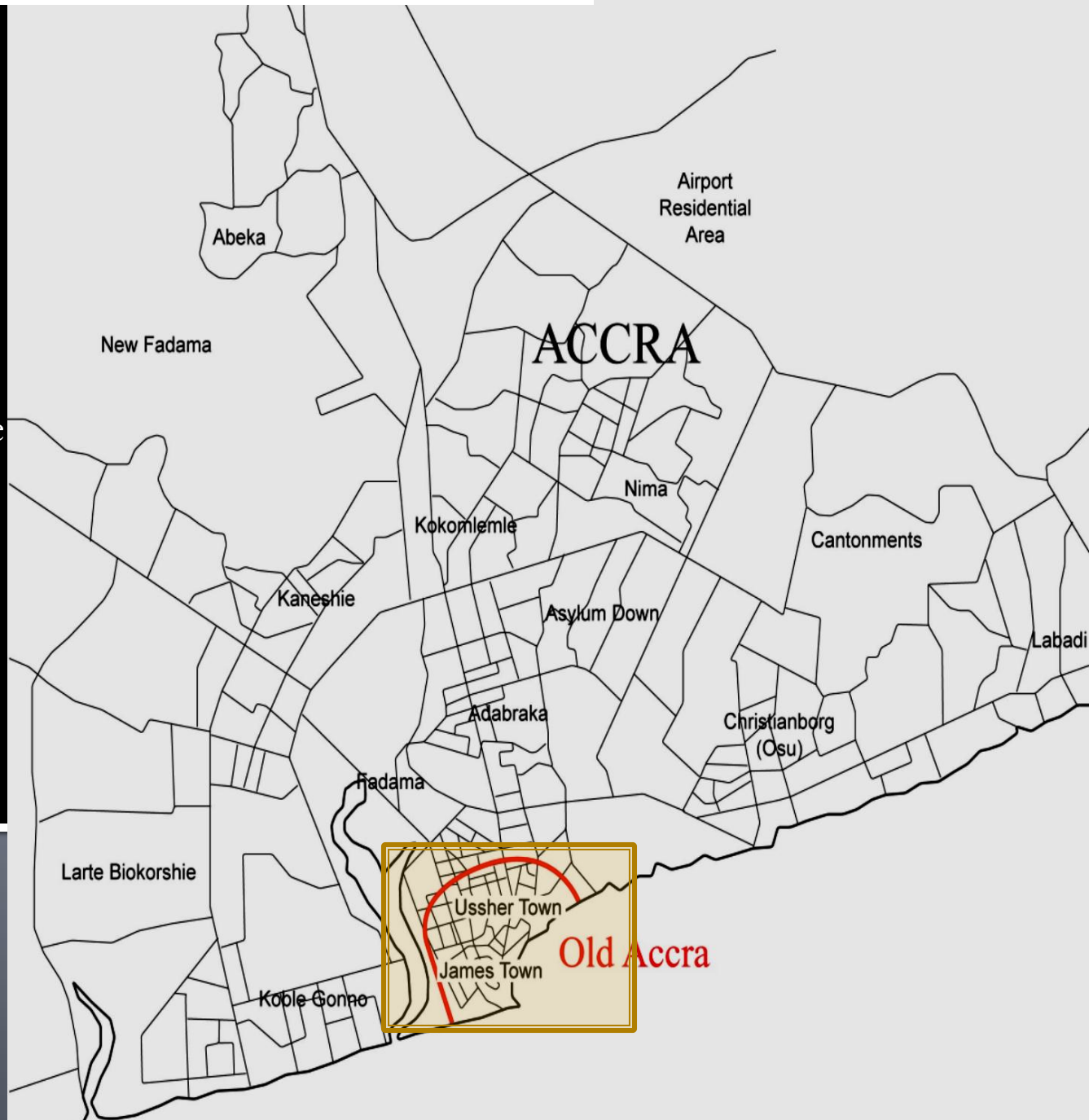


ACCRA IN THE NATIONAL CONTEXT

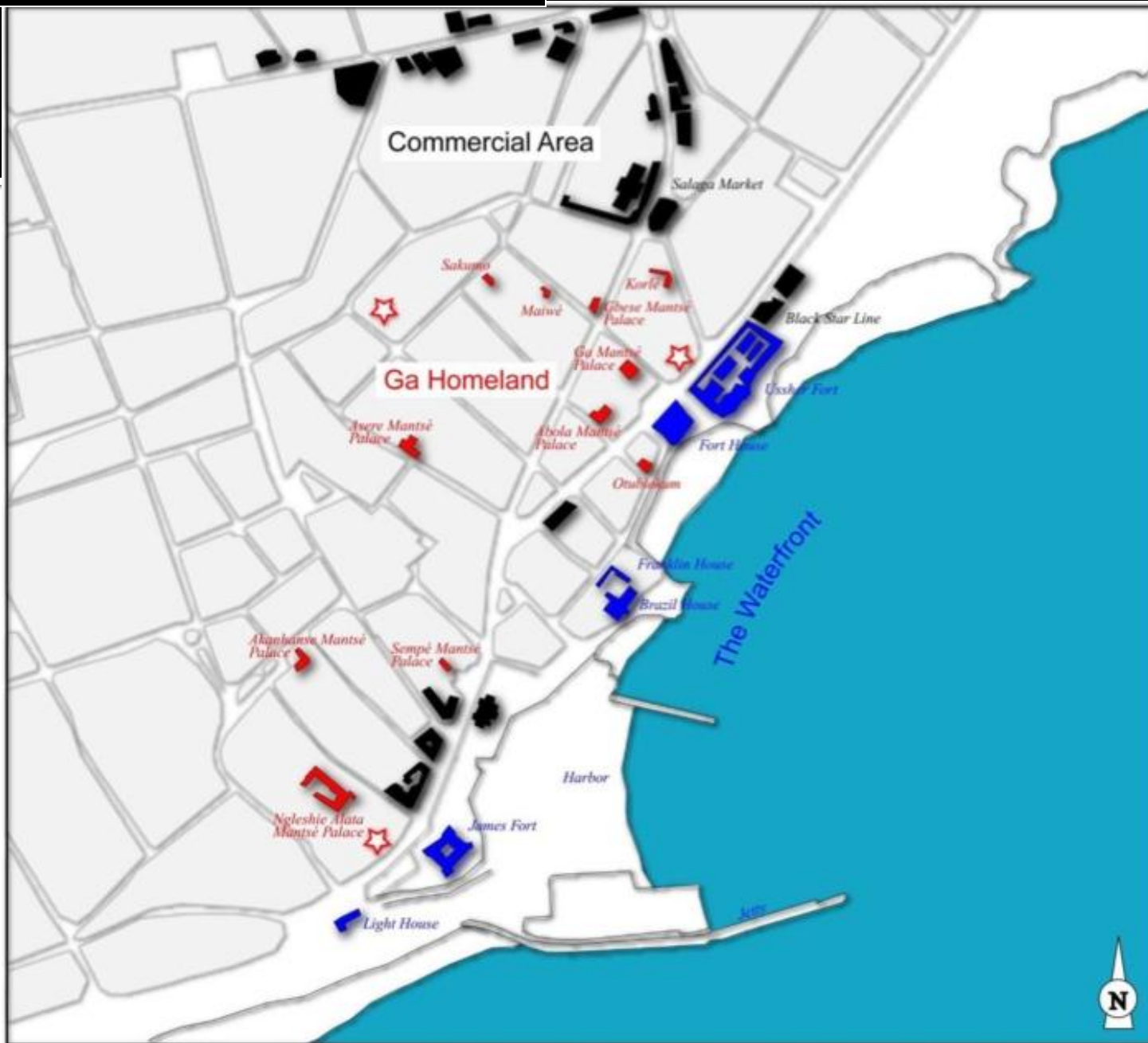


GA MASHIE (OLD ACCRA) IN THE CITY OF ACCRA CONTEXT

Old Accra comprises Ussher Town and James Town, which is still referred to as Ga Mashie. It forms the historical core of Accra and covers an area of 98 hectares (see map). It is located in the south of the city, extending to the Atlantic Ocean, and is bounded in the west by the lagoon, in the north by the industrial zone and in the east by the business district.



HISTORICAL FEATURES



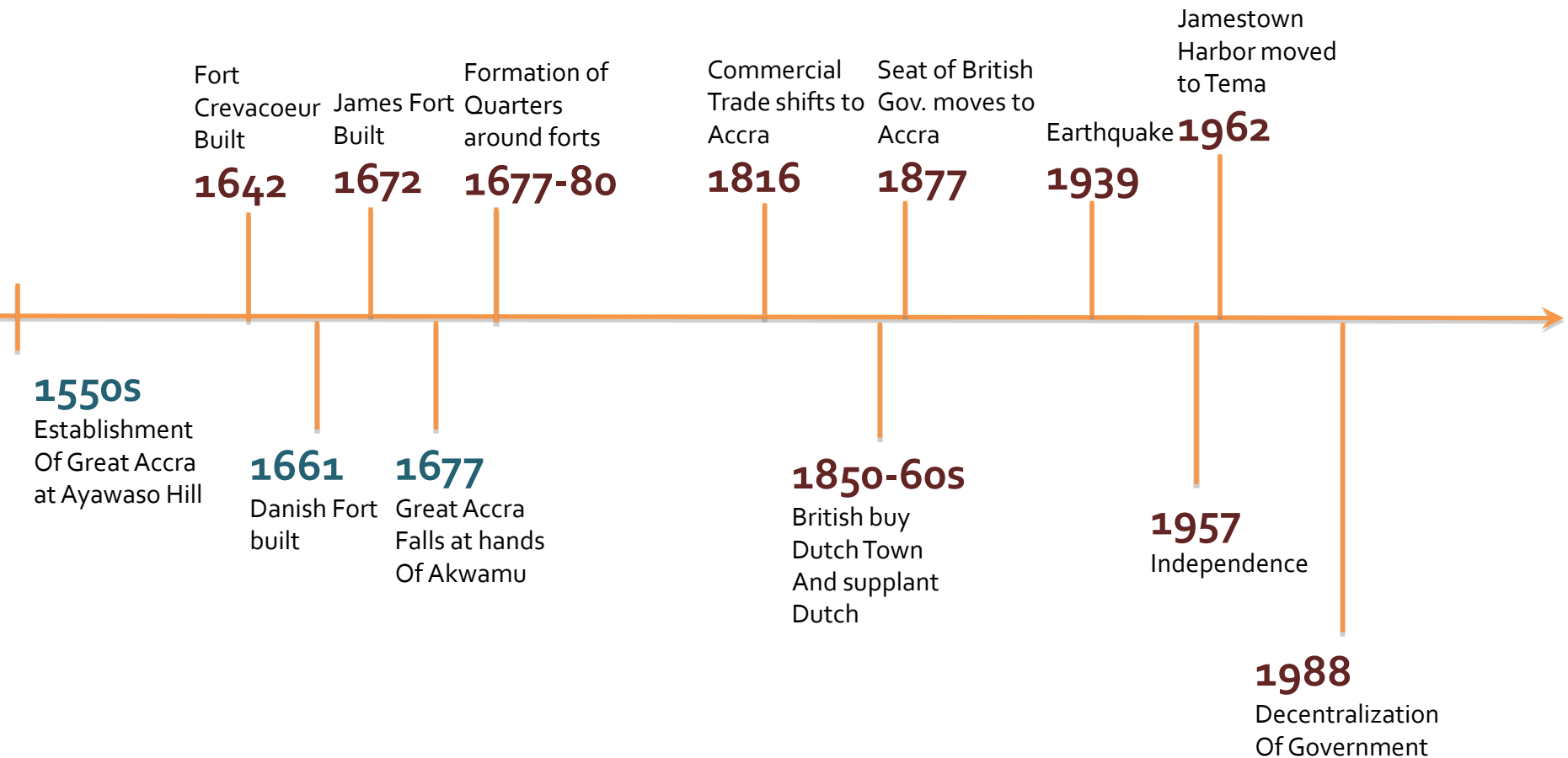


Korle Lagoon

James Town

Usher Town

HISTORY OF GA MASHIE



GA MASHIE IN THE 18TH CENTURY



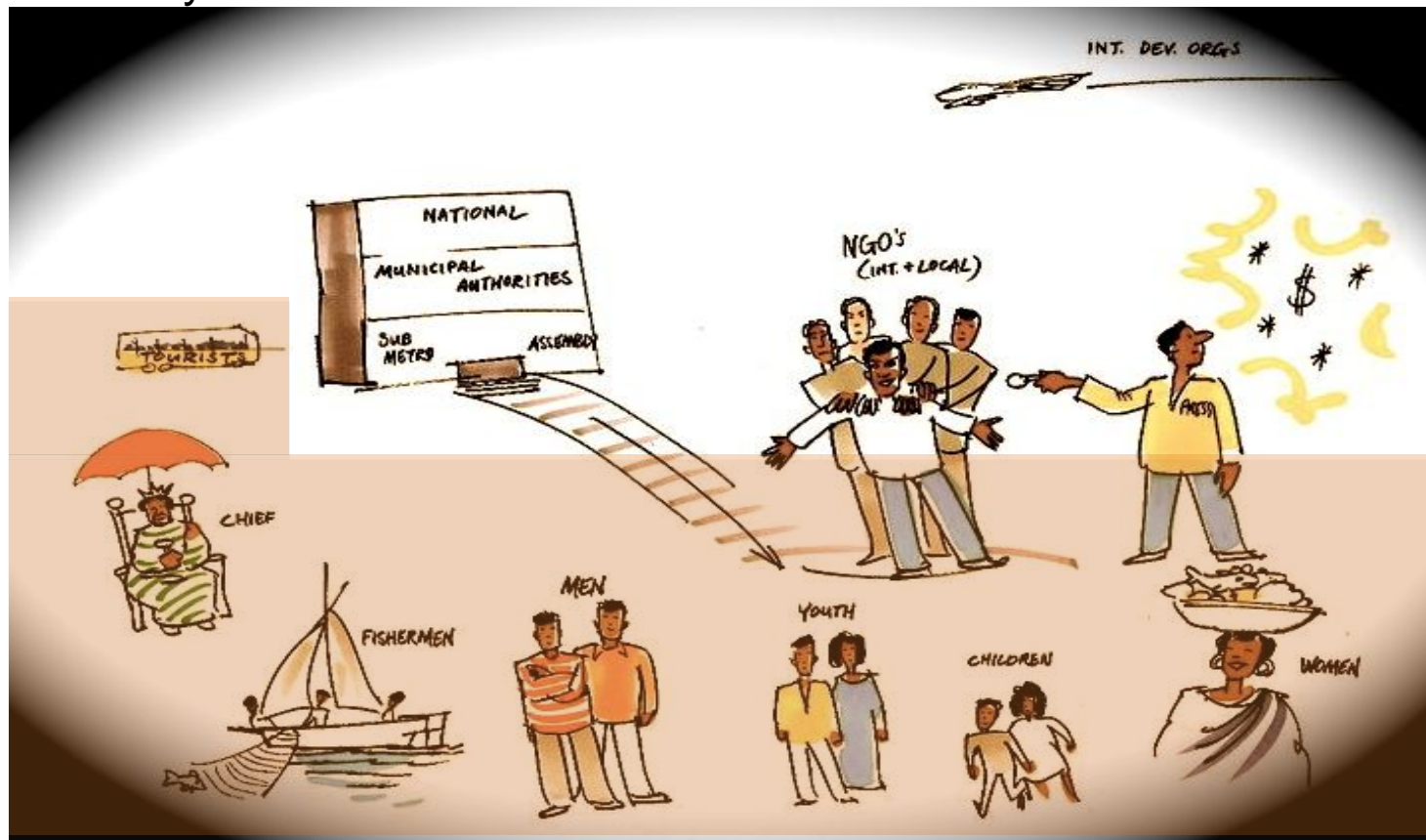
Courtesy of the Foreign and Commonwealth Office Library

PROBLEMS AND ISSUES



TARGET GROUP

- The revitalisation of Old Accra is targeted at the inhabitants of Old Accra including women, children, fishermen, the wider Ghanaian public, the tourist industry and investors.



HISTORICAL FEATURES

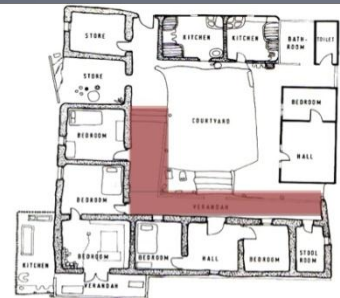
Coastal architecture:
forts, trading houses



The Waterfront



High Street



Traditional Urban Fabric



SOCIAL ISSUES

Five Priority Areas

1



Housing

2



Education

3



**Sanitation &
Waste
Management**

4



Tourism

5

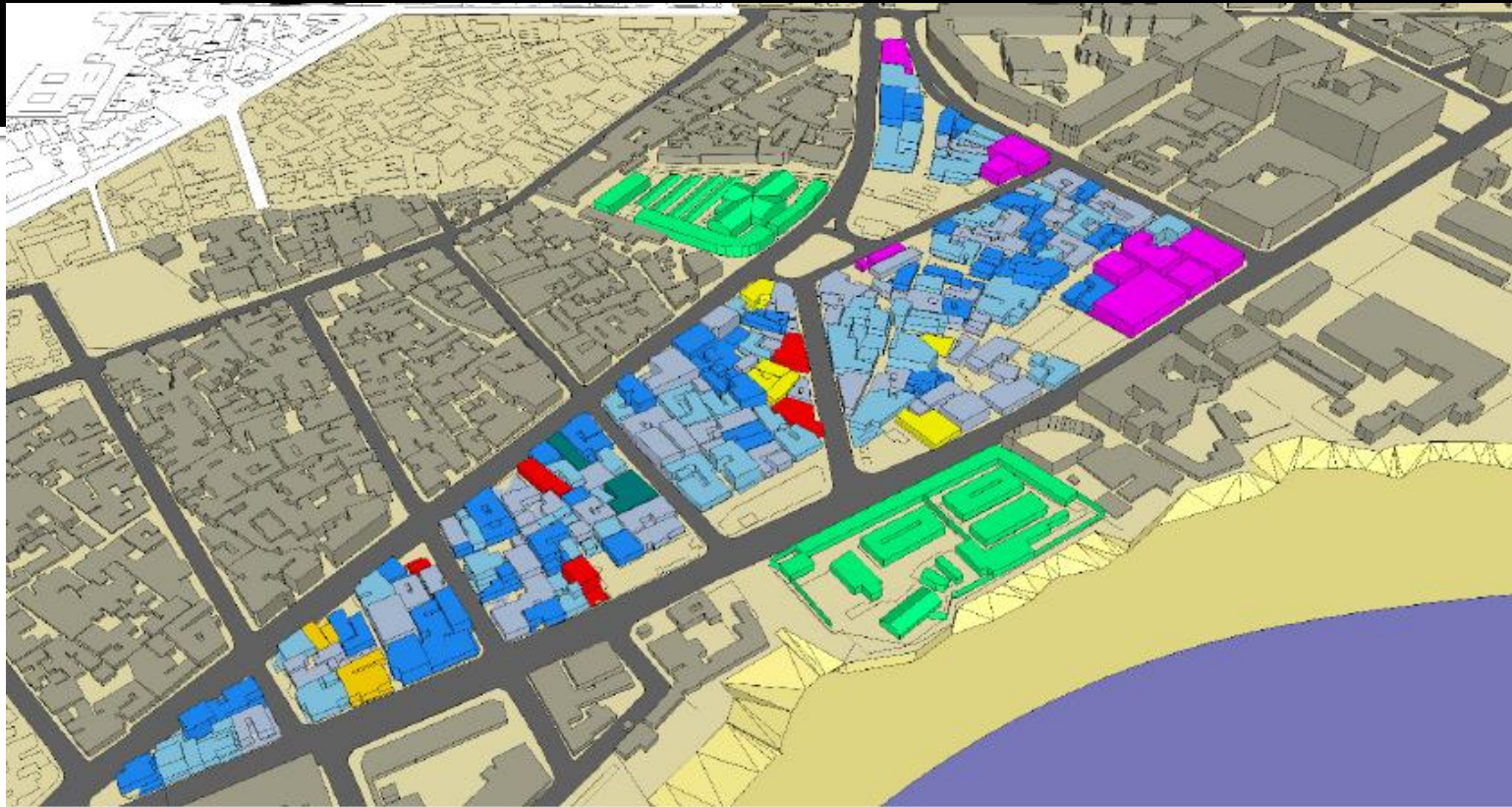


**Local
Economic
Development**

Housing Improvement Project

- The aim of the Ga Mashie housing Improvement Program is to improve housing and housing infrastructure and maintain heritage assets of the people of Ga Mashie through the creation of enabling conditions for public-community-private sector intervention.

EXISTING SITUATION IN CORE AREA



Legend

- various family clusters
- unavailable land
- uninterested family

- commercial property
- special
- litigation

CURRENT STATE

Transformation



offering public places is a major issue in a congested district

DEVELOPMENT LINKAGE TO BEACH FRONT PROPERTIES



**Development of core area
would encourage
development of beach front
property for tourist attraction
and improvement of local
economy**



